

**ADVANCE ENGINEERING
CONSULTANTS**



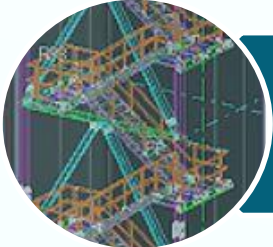
Advance Engineering Offers

- **Complete structural analysis and design of plants & multi-story RCC / Steel buildings.**
- **Analysis for static / dynamic effects on structures with the aid of latest 2D and 3D engineering software's.**
- **Rendering detailed design drawings for comprehensive execution at site.**
- **Taking out quantities, Estimation, Tender Preparation and Costing for various types of structures.**
- **Industrial site visits and inspections to resolve critical constraints and complexities.**
- **Erection schemes in the form of modules as per client requirement.**
- **Dynamic analysis & design of high rise chimney (up to 100 m. high) in structural steel.**
- **Design of structures using I.S., N.I.S.D., B.S., A.C.I., A.I.S.E. and Euro codes.**

Our Strength



Design services in R.C.C. and structural steel for Chemical Plants, Fertilizer Plants, Polyester Plants, Refineries, hand Gloves Plant, Switchyards and Commercial structures



The fabrication drawings that were previously prepared in AutoCAD are now prepared in X-steel (TEKLA Structure)



Advance Engineering Group is now prepared to undertake much larger projects and have work on overseas projects



Advance Engineering Group has executed turnkey projects offering services in architecture, civil, structural, plumbing, electrical and instrumentation with our associates

Key Personnel

SHRIDHAR G. NEWALKAR

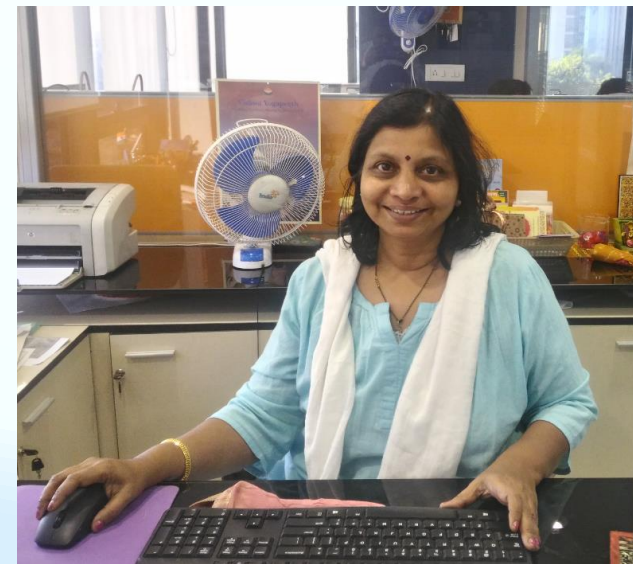
- A gold medallist from V.J.T.I., received the B.E. Civil degree in the year 1983.
- Worked with M/s. Billimoria & Co. and M/s. Dubon Project Engineering Pvt. Ltd. on numerous commercial projects mainly Stadiums and 5 Star hotels.
- March 1987 onwards working as Partner of M/s. Advance Engineering Consultants.
- Since Sept.1994 working as whole time Director / Partner of M/s. Advance Consulting Engineers Pvt. Ltd.
- Worked in Bechtel's London Office for six months in the year 1997 on Jamnagar Refinery Complex for M/s Reliance Petroleum Ltd.



Key Personnel

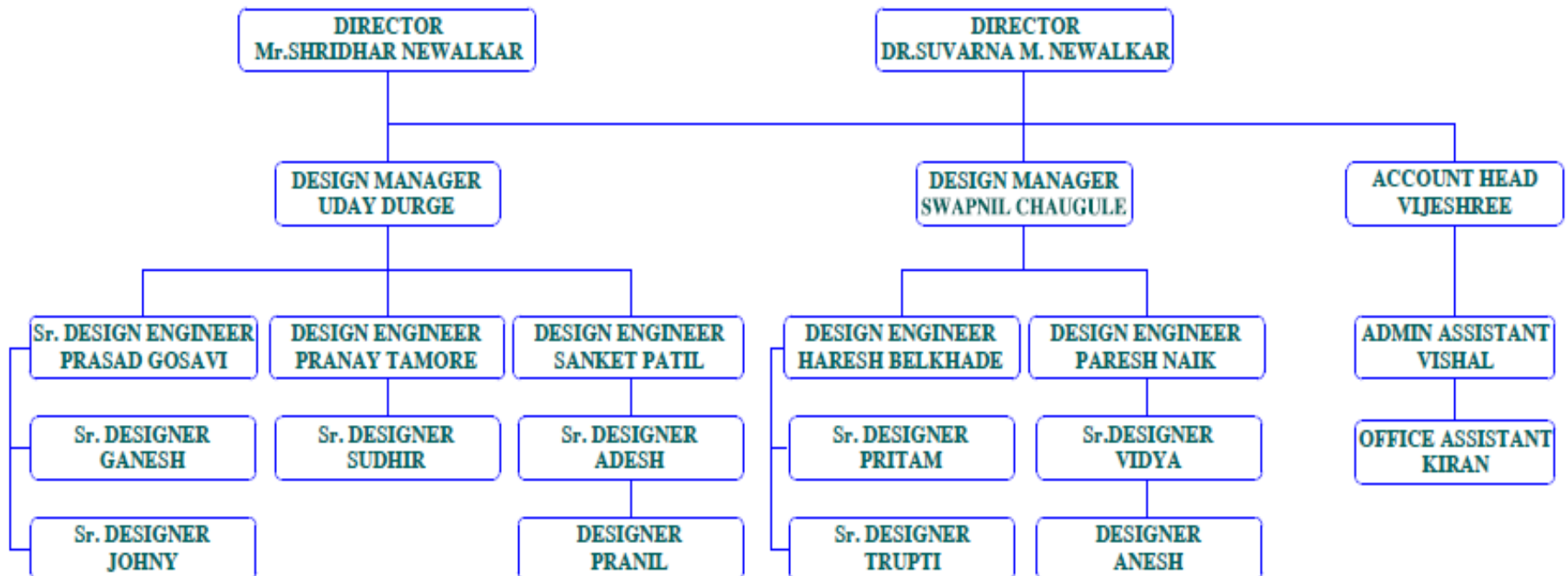
Dr. SUVARNA M. NEWALKAR

- A graduate from V.J.T.I., received the B.E. Civil degree in the year 1983.
- Worked with M/s. Associated Industrial Consultants, M/s. Jacobs H & G Ltd. and M/s. Structwel Designers & Consultants on various industrial projects, mainly Polyester and chemical plants.
Nature of Work:- Analysis and design of following projects were executed as Associate / Principal Engineer.
- December 1989 onwards working as Partner of M/s. Advance Engineering Consultants
- Since Sept.1994 working as whole time Director / Partner of M/s. Advance Consulting Engineers Pvt. Ltd.



Organization Chart

ORGANIZATION CHART



Quality Control

Deliverable Schedule

Sl. No.	Deliverable Title	Prepared by / Checked by	Issue Date	Rev.
1	Site location	Ground		
2	Site plan	Ground	20/06/22	01
3	Site plan	Ground	20/06/22	01
4	Site plan	Ground	20/06/22	01
5	Site plan	Ground	20/06/22	01
6	Site plan	Ground	20/06/22	01
7	Site plan	Ground	20/06/22	01
8	Site plan	Ground	20/06/22	01
9	Site plan	Ground	20/06/22	01
10	Site plan	Ground	20/06/22	01
11	Site plan	Ground	20/06/22	01
12	Site plan	Ground	20/06/22	01
13	Site plan	Ground	20/06/22	01
14	Site plan	Ground	20/06/22	01
15	Site plan	Ground	20/06/22	01
16	Site plan	Ground	20/06/22	01
17	Site plan	Ground	20/06/22	01
18	Site plan	Ground	20/06/22	01
19	Site plan	Ground	20/06/22	01
20	Site plan	Ground	20/06/22	01

Design Basis

DESIGN BASIS FOR THE DESIGN OF THE FOUNDATION OF THE TANK

1. GENERAL: The design shall be in accordance with the provisions of IS 456:2000 and IS 800:2008.

2. MATERIALS: The materials to be used shall be as per the following table:

Sl. No.	Material	Grade	Min. Strength
1	Cement	OPC 42.5	42 MPa
2	Concrete	M25	25 MPa
3	Steel	Fe 415	415 MPa

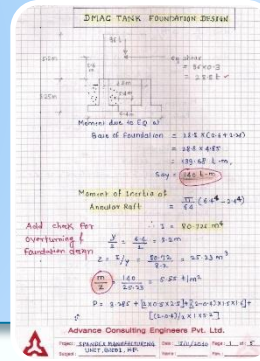
3. DESIGN LOADS: The design loads shall be as per IS 875:2007.

4. FOUNDATION: The foundation shall be designed as per IS 456:2000 and IS 800:2008.

Check List

CIVIL DEPARTMENT CHECK LIST BC DETAILS OF PILECAPS

Sl. No.	Check Activity	By	At	By	At
1	GENERAL:				
2	Design No., Rev. No., Title, Date				
3	General & special notes, Read				
4	Reference drawing list				
5	Run plot and North direction				
6	Check grid levels (G.S.L. & F.S.L.)				
7	Dimensions, Read, Dia., Spacing, Link				
8	Is it in height corresponding to column grade				
9	Reinforcement details of pilecaps in plan & section				
10	Supporting of flag pole				
11	Depth of pilecap from average length of pilecap reinforcement				
12	Is it in height corresponding to column grade				
13	Is it in height corresponding to column grade				
14	Actual size of each of piles				
15	Is it in height corresponding to column grade				
16	Is it in height corresponding to column grade				
17	Reinforcement quantity in each				
18	Is it in height corresponding to column grade				
19	Is it in height corresponding to column grade				
20	Is it in height corresponding to column grade				
21	Is it in height corresponding to column grade				
22	Is it in height corresponding to column grade				
23	Is it in height corresponding to column grade				
24	Is it in height corresponding to column grade				
25	Is it in height corresponding to column grade				
26	Is it in height corresponding to column grade				
27	Is it in height corresponding to column grade				
28	Is it in height corresponding to column grade				
29	Is it in height corresponding to column grade				
30	Is it in height corresponding to column grade				
31	Is it in height corresponding to column grade				
32	Is it in height corresponding to column grade				
33	Is it in height corresponding to column grade				
34	Is it in height corresponding to column grade				
35	Is it in height corresponding to column grade				
36	Is it in height corresponding to column grade				
37	Is it in height corresponding to column grade				
38	Is it in height corresponding to column grade				
39	Is it in height corresponding to column grade				
40	Is it in height corresponding to column grade				
41	Is it in height corresponding to column grade				
42	Is it in height corresponding to column grade				
43	Is it in height corresponding to column grade				
44	Is it in height corresponding to column grade				
45	Is it in height corresponding to column grade				
46	Is it in height corresponding to column grade				
47	Is it in height corresponding to column grade				
48	Is it in height corresponding to column grade				
49	Is it in height corresponding to column grade				
50	Is it in height corresponding to column grade				
51	Is it in height corresponding to column grade				
52	Is it in height corresponding to column grade				
53	Is it in height corresponding to column grade				
54	Is it in height corresponding to column grade				
55	Is it in height corresponding to column grade				
56	Is it in height corresponding to column grade				
57	Is it in height corresponding to column grade				
58	Is it in height corresponding to column grade				
59	Is it in height corresponding to column grade				
60	Is it in height corresponding to column grade				
61	Is it in height corresponding to column grade				
62	Is it in height corresponding to column grade				
63	Is it in height corresponding to column grade				
64	Is it in height corresponding to column grade				
65	Is it in height corresponding to column grade				
66	Is it in height corresponding to column grade				
67	Is it in height corresponding to column grade				
68	Is it in height corresponding to column grade				
69	Is it in height corresponding to column grade				
70	Is it in height corresponding to column grade				
71	Is it in height corresponding to column grade				
72	Is it in height corresponding to column grade				
73	Is it in height corresponding to column grade				
74	Is it in height corresponding to column grade				
75	Is it in height corresponding to column grade				
76	Is it in height corresponding to column grade				
77	Is it in height corresponding to column grade				
78	Is it in height corresponding to column grade				
79	Is it in height corresponding to column grade				
80	Is it in height corresponding to column grade				



Deliverable Schedule

Design basis

Check List

Drawing Check Print

Design Calculation Check Print

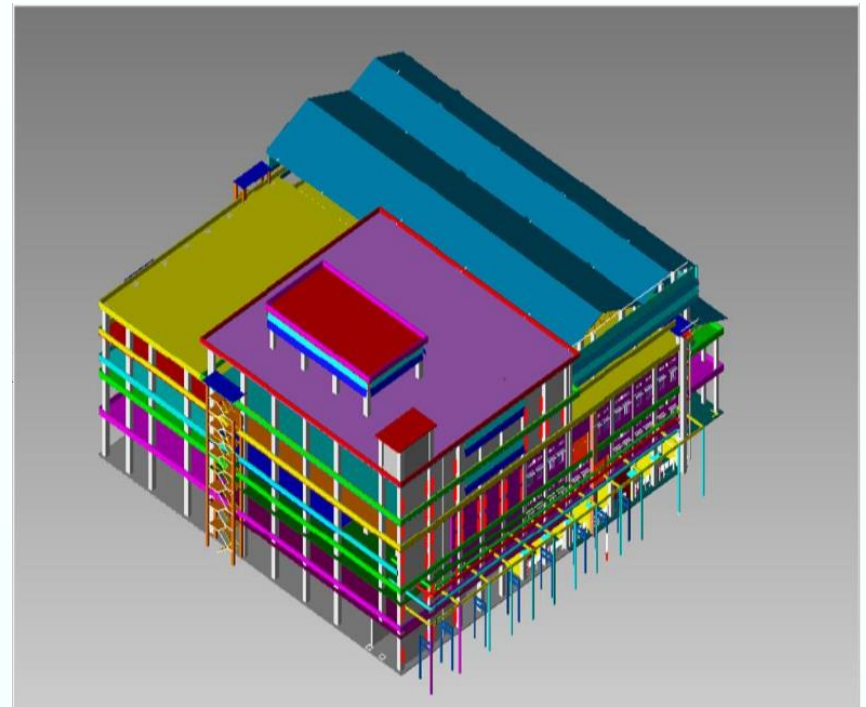
Weekly Review Meeting

Projects

**Polyester Plant CP6 at Patalganga,
Maharashtra for Reliance Industries
Ltd.2001**



**Polyester Plant CP7 at Patalganga,
Maharashtra for Reliance Industries Ltd.
2004-5**



Projects

Non Plant Buildings at Reliance Jamnagar Export Refinery, Jamnagar 2006-2008

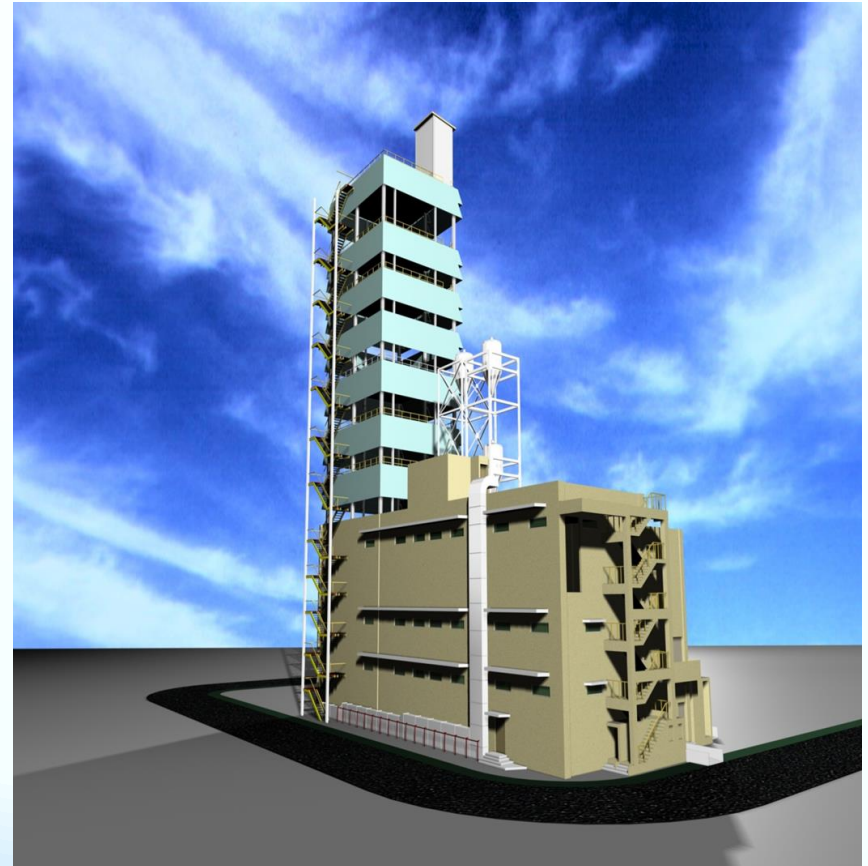


Projects

Automated Product Handling System (APHS) for Reliance Industries Ltd. at various plants. 1996-2000



IDY Plant at Hazira, Gujarat for Reliance Industries Ltd. 2008



Projects

100 TPD Polyester Plant at Nashik, Maharashtra for Polygenta Technologies Ltd. 2004-2006



Projects



220/132/110/66kV Switchyards and Substation for :-

- M/s. Siemens Ltd.
- M/s. Bharat Bijlee Ltd.
- M/s. Emco India Ltd.
- M/s. Bajaj Electricals Ltd.
- M/s. Suzlon Gujarat Wind Park Ltd.
- M/s. Stelmec Ltd.
- Maharashtra State Electricity Board
- Chhattisgarh State Electricity Board
- Electricity Department Government of Goa

Latest Projects

India's first Spandex (3x13.5 TPD) Plant at Baddi, Chandigarh for Indorama Industries Ltd. in 2010



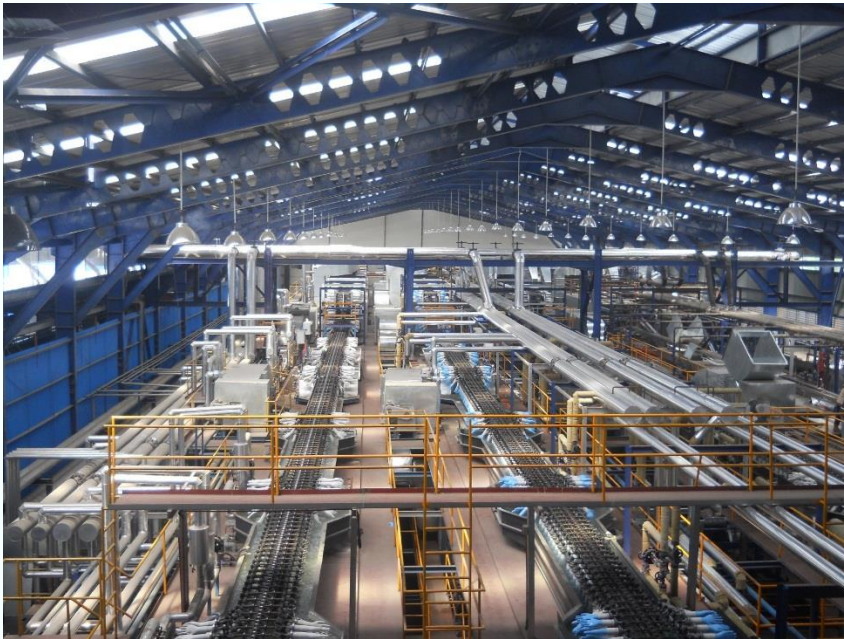
Latest Projects

**750 TPD Polyester Plant CP4 at Purwakarta, Indonesia
for PT Indorama Polychem Indonesia in 2012**



Latest Projects

**Hand Gloves Plant GP5 and GP6 at Medan, Indonesia
for Medisafe Technologies in 2013 & 2016**



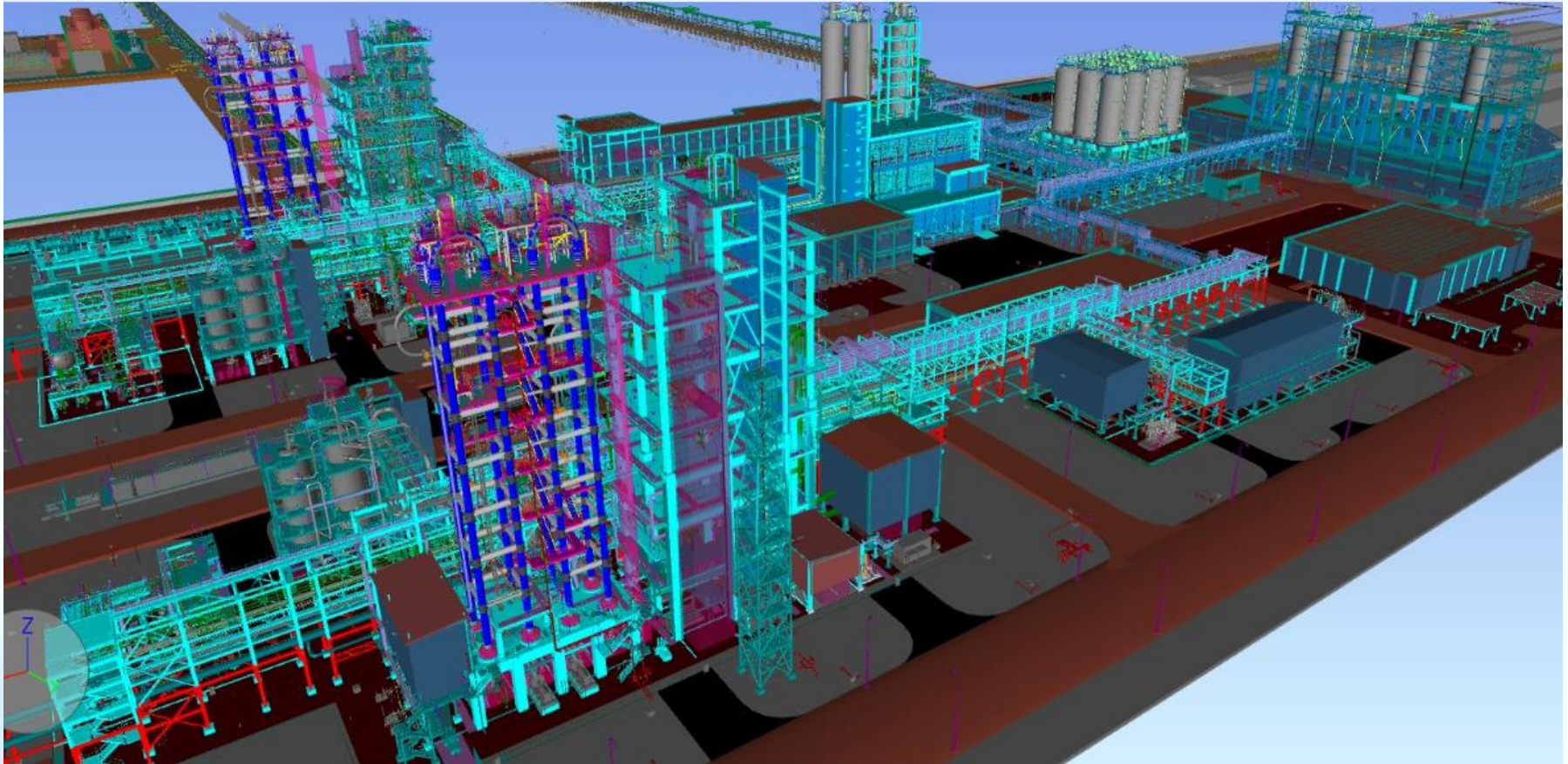
Latest Projects

**Jumbo CP Building (3600 TPD PTA & 3000 TPD PET Plant)
at Texas, U.S.A for Mossi Ghisolfi Group in 2014**



Latest Projects

Refinery at Paradip, Orissa for Indian Oil Corporation in 2016



Latest Projects

Refinery at Paradip, Orissa for Indian Oil Corporation in 2016 – Overall PP Plant Work Progress



Latest Projects –WORK PROGRESS



EXTRUSION BUILDING



BAGGING SILO



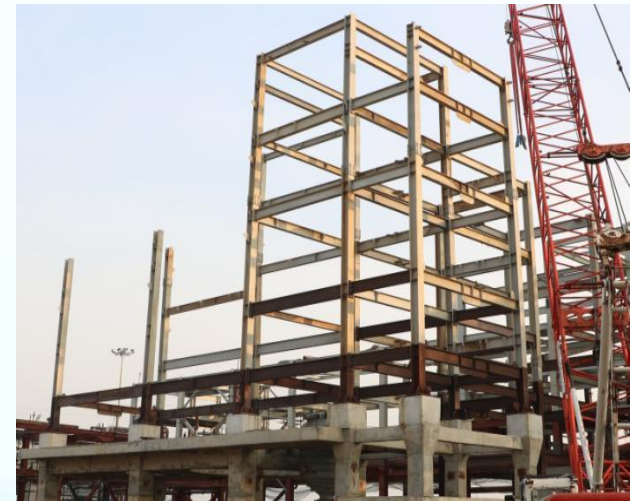
STEAMING & REACTOR



HOMOGENIZATION BUILDING



MAIN-SUBSTATION BUILDING



BLOW DOWN BUILDING

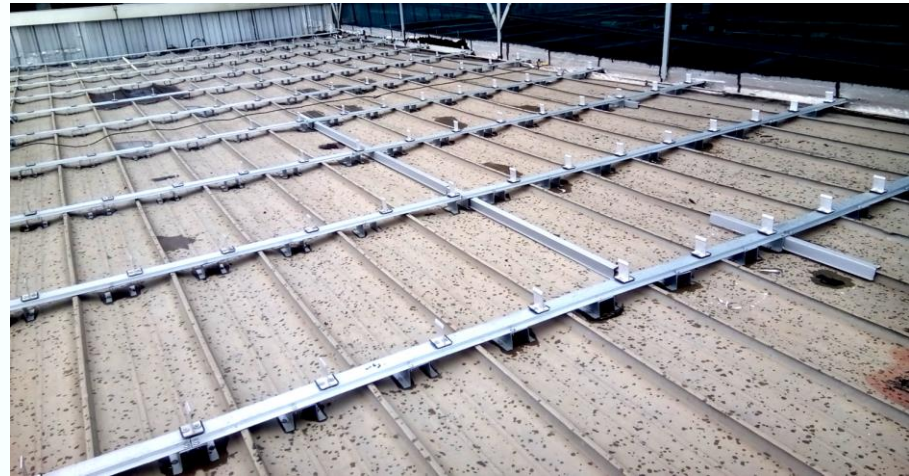
Latest Projects

Fitness Zone Structures for river land development project (Goda Park) at Godavari river Nashik, Maharashtra in 2015



Latest Projects

Retrofitting at Reliance Corporate IT Park, Navi Mumbai, Maharashtra in 2015





Other Projects

- Analysis & design of Polyester Plant and Utilities for M/s. Central India Polyesters Ltd, Mouda, Nagpur.
- Design and Drawings for PET Flakes Project for M/s. India Polyfibres Ltd. : Spinning Building, Dryer & F/H Building, Draw line / Creel Area.
- Design & detailing of IPA & Alcohol Plants at IPCL Gandhar
- Analysis, design & detailing of Bi-component Project at Patalganga for M/s. Reliance Industries Ltd. including utilities for same. (Capacity 240 Ton per day). The scope Included co-ordination with M/s. Aker Kvaerner Power gas Ltd. on all other Engineering inputs.
- Analysis, design & drawings for Chip Blending Project for M/s. Recron Synthetics Ltd.
- Design & drawings for Structural Frame Erection Schemes for M/s. Reliance Industries Ltd., Jamnagar.
- Hypox Building for M/s. India Polyfibers Ltd.
- Administration Building & Utility Block for M/s. VVF Ltd at Taloja.
- NG-3 Pilot Plant for M/s. Reliance Industries Ltd, Patalganga.
- Water Treatment Plant for M/s. Jindal Power Ltd, Raigad, M.P.
- Analysis, design and drawings for I.O.C.L. Baroda D.M. Plant for M/s. Ion Exchange India Ltd.
- Analysis, design and detailing of IDC2 at DAKC for M/s. Reliance Infocom Ltd.
- Analysis, design and detailing of IDC at RIL, Vakola Office.
- Analysis and design of 60.0 M high steel stack for BPCL, Mumbai for M/s. Larsen & Toubro Ltd.
- Analysis, design and drawings for Reverse Osmosis Plant for M/s. Indian Rayon at Veraval, Gujarat.

Other Projects

- Analysis, design and detailing of IDC1 at DAKC for M/s Reliance Infocom Ltd.
- Analysis, design and drawing of Overhead Tractor Supporting Structure for M/s. Haden Josts Engg.India Ltd.
- Analysis, design and drawings for Reverse Osmosis Plant for M/s. Gujarat Heavy Chemicals Ltd. For M/s. Ion Exchange (I) Ltd.
- Analysis, design and drawings of G.N.F.C., CNA-II Plant @ Bharuch for M/s. UHDE Krupp India Ltd.
- Analysis, design and drawings of Blast Proof Control Room for I.O.C.L, Panipat for M/s. Larsen & Toubro Ltd.
- Analysis, design and drawings of TEG Cleaning Building for M/s. Reliance Industries Ltd, Patalganga.
- Analysis and design of 60.0M high steel stack of Petronos Malaysia for L & T Ltd.
- Analysis, design and drawings of P.A.C.L. for 100 TPD Caustic Soda Plant for M/s. UHDE Kruppe India Ltd.
- Analysis, design and drawings of CO-2 Plant for R.C.F., Thal for M/s. Larsen & Toubro Ltd.
- Analysis, design and drawings of Salmoiraghi System for M/s. Reliance Industries Ltd., Patalganga.
- Detail Engineering of Grease Plant for HPCL at SILVASSA.
- Design of Plant buildings and various offsite structures for Rajshree Polyfil Ltd. Bharuch for M/s. Aker Kvaerner Powergas Ltd.
- Analysis, design and drawings of PET Chip Silo for M/s Reliance Industries Ltd., Hazira.
- Design of VBU & BU Heaters for Panipat for M/s Petron Engineering Construction Ltd, Mumbai.
- Design and detailing of various structures of EID Parry for M/s UHDE Kruppe India Ltd.
- Design and detailing of G.A.C.L. Plant for M/s UHDE Kruppe India Ltd. for 300 TPD Caustic Plant at Gandhar.



ADVANCE ENGINEERING CONSULTANTS.

Odyssey IT Park, 5th Floor, Unit No. 504, Wagale Indl.
Estate, Road No. 9, Near Old Passport Office,
Thane (W) – 400604, Maharashtra, India.

E-Mail : advanceengg@advanceengg.in

Tel. : 0091 22 2583 2625, 0091 22 2583 2626

Visit us at : www.advanceengg.in

*we believe in the benefits of team work
and a proficient work ethics of our team members*